

Reg. No. :

--	--	--	--	--	--	--	--	--	--	--	--	--	--	--	--	--	--	--	--

Question Paper Code : 63152

M.B.A. DEGREE EXAMINATION, APRIL/MAY 2017.

Second Semester

BA 7205 — INFORMATION MANAGEMENT

(Regulations 2013)

Time : Three hours

Maximum : 100 marks

Answer ALL questions.

PART A — (10 × 2 = 20 marks)

1. Define information system with an example.
2. What is GIS?
3. Distinguish between decision table and data flow diagram.
4. What is context diagram? Give an example.
5. What is association? List its types.
6. What is data warehousing?
7. Define disaster management.
8. Define intranet.
9. Define e-governance.
10. What is CMM?

PART B — (5 × 13 = 65 marks)

11. (a) Explain the steps of life cycle method of developing application.

Or

- (b) List and explain the types of information system.

12. (a) What is ER diagram? Draw it for a state of art library of a leading university.

Or

- (b) Draw a system flowchart for the inventory control system of an automobile company.
13. (a) Discuss the steps of designing RDBMS applied to a reality by assuming suitable number of reports in that reality.

Or

- (b) What are methods of resource locking to have concurrency control? Compare and contrast them.
14. (a) List and explain different types of computer network.

Or

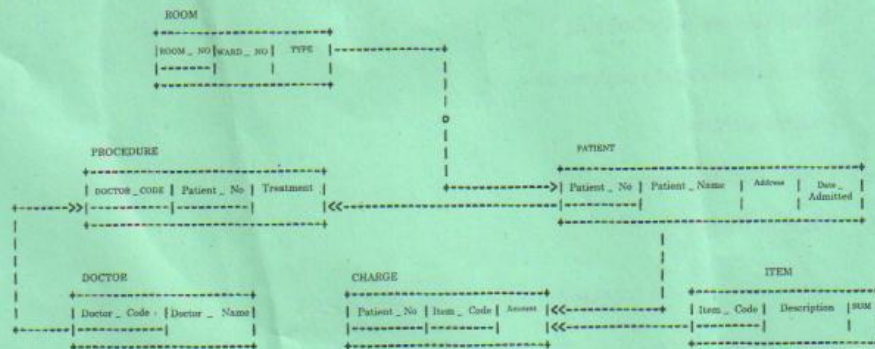
- (b) Discuss the need for security in information management? Also discuss control methods of information systems.
15. (a) Give a schematic view of data mining and explain its stages.

Or

- (b) What is business intelligence? Discuss the components of balance score card.

PART C — (1 × 15 = 15 marks)

16. (a) Consider the conceptual data model of hospital system as shown below and map it to a relational data model.



Or

- (b) Explain the cubes data warehouse model with an example.